

LEXUS RZ



RZ

At Lexus, we have a lot to be proud of. A leader in luxury car electrification for nearly 20 years. Over 2.5 million Lexus Electrified models on the road across the globe. Cars that stand out for their sophistication, quality and award-winning reliability.

These are impressive facts, but for Lexus, performance is more than just numbers. And electrification is more than just batteries and motors. It's the chance to define a new kind of driving pleasure, where each journey radiates confidence, control and comfort. With your Lexus responding instantly to your every move, you'll enjoy a luxury that is personal, a luxury rooted in the uniquely crafted connection between car and driver.

Just drive the all-electric RZ 300e luxury SUV and you'll know what we mean...

Scan the QR code to learn more about the Lexus RZ



ALL IMAGES CONTAINED IN THIS DOCUMENT ARE FOR ILLUSTRATIVE PURPOSES ONLY.
LOCAL SPECIFICATION MAY VARY.

LEXUS RZ



LEXUS

LEXUS LINK+ CONNECTED SERVICES

Driving in a Lexus has never been better and with Lexus Link+ Connected Services the experience becomes even smoother, so you're always comfortable and in control, no matter where your drive takes you.

Scan the QR code to learn more about the Lexus Link+ App.



LEXUS

MANUFACTURER'S WARRANTY

For peace of mind Lexus manufacturer's warranty ensures that every trip runs smoothly with:

Manufacturer Warranty

- 3yrs/100,000km - Manufacturer Warranty
- 3yrs/unlimited mileage - Surface rust/ Paintwork
- 12yrs/unlimited mileage - Corrosion Perforation

BEV Warranty

- 5yrs/100,000km - All EV Components
- 8yrs/160,000km - EV Battery Warranty
- Up to 10yrs/ 1 Million Km EV Battery Extended Care once serviced with a Lexus Dealer

For further warranty details contact your local Lexus Dealer.



LEXUS

LEXUS RELAX

Lexus Relax is a testament to the confidence we place in the quality of our vehicles. After your manufacturer's warranty finishes, you can still feel complete peace of mind, with 12 months OR 15,000km warranty when you service with us. So you can rest assured that your car is in safe hands – with expert technicians, who only use genuine parts. So your Lexus stays 100% Lexus.

If you choose Lexus to service your vehicle, we'll reward your loyalty. Once your service is due, all you need to do is bring your Lexus in for a service and your Lexus Relax warranty will be renewed until your next service is due – up to 10 years vehicle age or 185,000km (whichever comes first) after the expiration of the manufacturer's warranty. See Lexus Website (www.lexus.ie/owners/warranty/lexus-relax) for more details.



LEXUS

PERFORMANCE AND EFFICIENCY

Battery & Range	RZ 300e FWD
Battery Size (kWh) (Gross)	71.4
Electric Range (WLTP) (km)	Up to 475
AC Charging Power (kW) / Time (0-100%)	11 / Circa 9.5 hrs
DC Charging Power (kW) / Time (5-80%)	Up to 150 / Circa 31 mins
Electric Consumption (kWh/100km)	15.1
Onboard Charger (kW)	11

Powertrain	RZ 300e FWD
Drive	Front Wheel Drive
Electric Motor (kW/hp)	150/204
Torque (Nm)	266
Emission (WLTP) (g/km)	0
Top Speed (km)	160
Acceleration 0-100km/h (s)	8

Dimensions & Capacities	RZ 300e FWD
HEIGHT (mm)	1635
LENGTH (mm)	4910
WIDTH (mm)	1895
WHEELBASE (mm)	2850
BOOT CAPACITY (l)	522
TOWING CAPACITY (kg)	750



LEXUS **RZ**

BATTERY AND CHARGING



CHARGING 'PLUG AND PLAY'

Charging the Lexus RZ is easy and safe, with multiple charging options to meet your needs



HomeCharge

The easiest way to charge your Lexus RZ at home is to install a Lexus 240V HomeCharge electric vehicle charger. Contact your dealer for pricing.

*Compatible with Lexus Link+ App.



Public

Using high-output (up to 150 kW) public DC chargers, you can achieve a 5-80% charge in around 31 minutes*.

*DC Charging time subject to local conditions. In order to ensure effective charging and preserve battery health, DC Fast charging power may be reduced after 3.8 sessions (0-80%) per 24-hour period.

RZ EQUIPMENT & SPECIFICATION



EXECUTIVE



Safety

- LSS+ 3
- eCall
- Road Sign Assist with Intelligent Speed Assist
- Dynamic Radar Cruise Control (DRCC)
- Pre-Crash System inc. Pedestrian detection
- Lane Trace Assist (LTA)
- Lane Change Assist (LCA)
- Safe Exit Assist
- Supplemental Restraint System (SRS) airbags
- Hill-start Assist Control (HAC)
- Emergency Driving Stop System (EDSS)
- Anti-Theft Alarm (Siren + Sensor + Glass + Angle)
- Driver Monitor Camera
- Blind Spot Monitor
- Front Cross Traffic Alert (FCTA)

Convenience

- Smart Entry & Start
- Power Back Door with Kick Function
- Electric Powered Steering Column
- Ambient Lighting & INEI Illumination
- Dual Zone Automatic Climate Control w/ Humidity Sensor & Nanoe X
- Auto Door Lock
- Front Radiant Heater
- Lexus Climate Concierge
- Remote Climate Control

Seats

- Tahara upholstery front and rear seats
- Driver And Front Passenger Power 8-Way Seat Adjustment
- Driver 2-Way Power Lumbar Support
- Heated Front Seats
- 60/40 Split Fold Rear Seats

Interior & Instrumentation

- 3-spoke Tahara Trimmed Steering Wheel, Heated
- Wireless Charger
- 7" Multi-Information Display
- Power door lock
- Rear-view mirror with auto-dimming
- Luggage and tonneau cover

Audio & Nav

- Smartphone integration (Wireless Apple CarPlay™* & Wireless Android Auto)
- USB charging ports (Type -C), front (X3) and rear console (X2)
- Lexus Link Pro 14" Touchscreen Display with Embedded Navigation
- 10 speakers
- Digital Audio Broadcasting (DAB) radio
- Bluetooth mobile phone and audio connectivity

Exterior & Visibility

- Rain Sensor
- Privacy and Acoustic Glass
- LED Headlamps w/ Automatic High Beam
- Panoramic View Monitor
- Parking Sensors w/ Braking (PKSB) - Objects, Vehicles, Pedestrians
- Panoramic Roof, Fixed
- Dusk sensor
- Shark fin antenna

Wheels

- 18" Machine Finished Alloy Wheels, (235/60 R18)
- Tyre Repair Kit

EV Charging

- Mode 2 & Mode 3 Charging Cables

CO ² Combined (WLTP)	0 g/km
Annual Road Tax	€120
Towing Capacity	750kg
EV Range (Combined Cycle)	Up to 475km

*Apple CarPlay is a trademark of Apple Inc.

RZ EXTERIOR COLOURS



Sonic Platinum **(1L2)**



Sonic White **(085)**



Sonic Grey **(1L1)**



Sonic Copper **(4Y5) ***



Graphite Black **(223)**



Aether **(82Z)**

*Premium Metallic Paint

LEXUS

RZ INTERIOR TRIMS

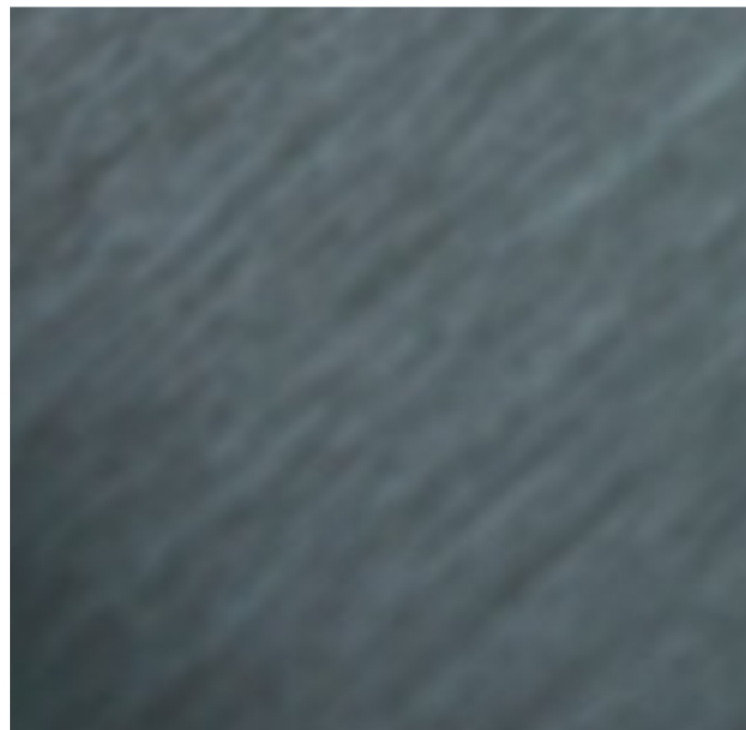
Grayscale Tahara Leather



LEXUS

RZ CENTRE CONSOLE

Wood Film



RZ KEY ACCESSORIES



RZ ESSENTIAL PACK



TRUNK LINER

Tailored to fit the trunk of your vehicle and provide protection against dirt and spills. The design features a special anti-slip surface pattern to help stop luggage moving.



FRONT AND REAR MUD GUARDS

Lexus mud guards are especially shaped to fit the wheel arches of your vehicle. They help to maintain the vehicle exterior by protecting against excessive dirt, mud spray and flying stone chips.

RZ LEXUS HOMECHARGE



LEXUS HOMECHARGE

Is the fastest and most convenient way to charge your electric vehicle at home. The Lexus HomeCharge electric vehicle charger is the only charger compatible with the Lexus Link App. Contact your dealer for pricing.

RZ LEATHER TEXTILE FLOOR MATS



LEATHER TEXTILE FLOOR MATS

Genuine tailored fit rubber floor mats help protect your carpets against the very worst conditions that you or your passengers dare to tread inside.





To the best of our knowledge, all information in this product guide is correct at the time of going to print. Details of specifications and equipment provided in this product guide are subject to local conditions and requirements and may, therefore, vary from models available in your area. Please enquire with your local dealer for details on your local specifications and equipment. Vehicle body colours may differ slightly from the printed photographs in this Product Guide. Lexus Ireland reserves the right to alter any details of specifications and equipment without prior notice.

© 2024 by Lexus Ireland. No part of this publication may in any way be reproduced without the prior written approval of Lexus Ireland.