

LEXUS NX



NX

At Lexus, we have a lot to be proud of. A pioneer and leader in luxury car electrification for more than 15 years. Over 2 million Self-Charging Hybrids on the road in every corner of the globe. A comprehensive range of electrified models that stand out for their sophistication, proven quality and award-winning reliability. These may be impressive facts, but for Lexus, performance is more than just numbers. And electrification is more than just batteries and motors. It's the unique chance to define a new kind of driving pleasure.

So when you make the human experience the hero, there's only one question that matters: how do we make you feel? Just drive the new NX and you'll know what we mean.

This is Lexus Electrified.

Scan the QR code to learn more about the Lexus NX



ALL IMAGES CONTAINED IN THIS DOCUMENT ARE FOR ILLUSTRATIVE PURPOSES ONLY.
LOCAL SPECIFICATION MAY VARY.

LEXUS NX



LEXUS

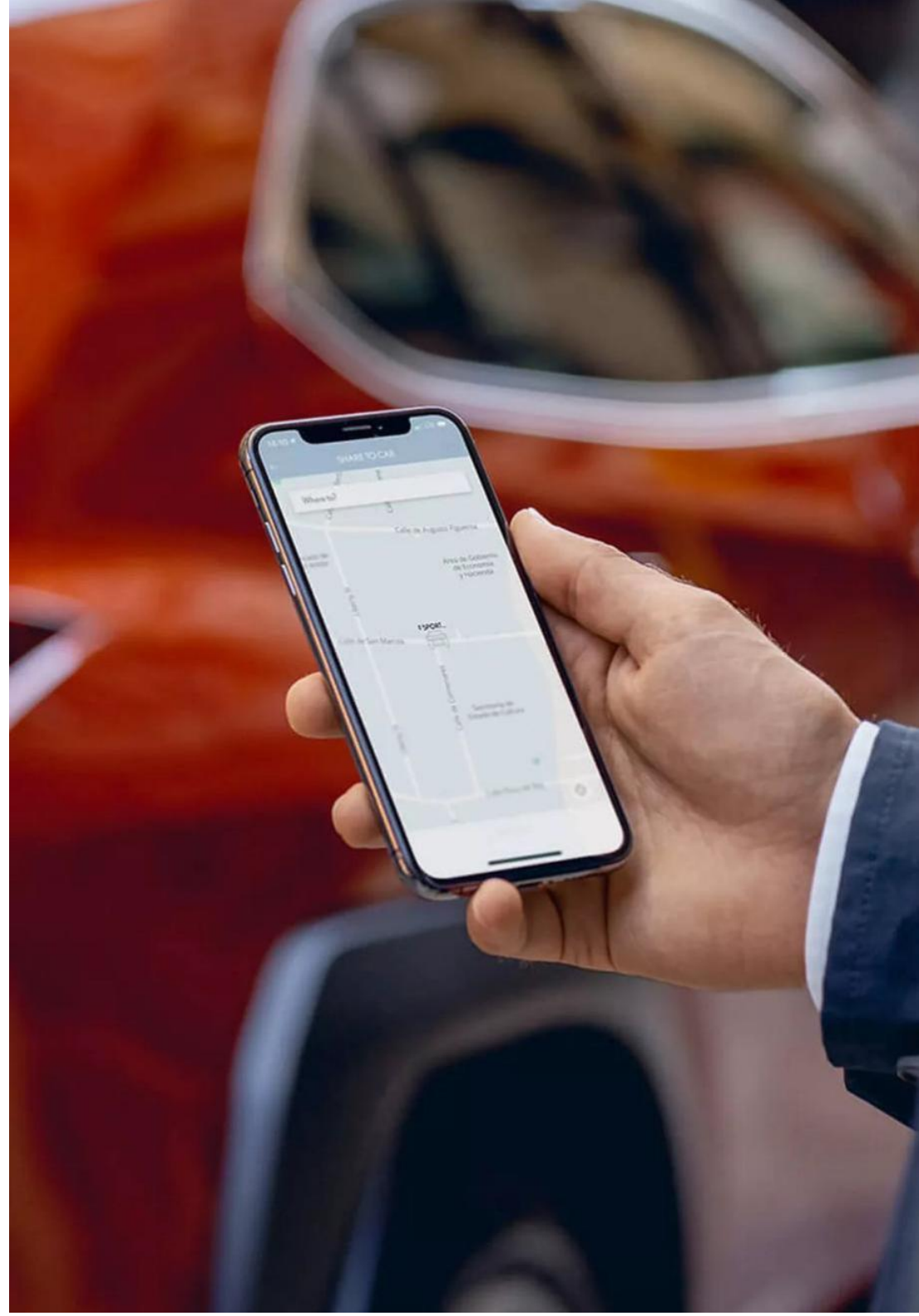
LEXUS LINK+ CONNECTED SERVICES

Driving in a Lexus has never been better and with Lexus Link Connected Services the experience becomes even smoother, so you're always comfortable and in control, no matter where your drive takes you.

Scan the QR code to learn more about the Lexus Link App.



LEXUS NX



LEXUS

MANUFACTURER'S WARRANTY

For peace of mind Lexus manufacturer's warranty ensures that every trip runs smoothly with:

Manufacture Warranty

- 3yrs/100,000km - Manufacture Warranty
- 3yrs/unlimited mileage - Surface rust/ Paintwork
- 12yrs/unlimited mileage - Corrosion Perforation

Hybrid Warranty

- 5yrs/100,000km - All Hybrid Components (Including Hybrid Battery)
- Up to 15yrs/unlimited mileage Hybrid Battery Warranty once serviced with a Lexus Dealer

For further warranty details contact your local Lexus Dealer.



LEXUS

LEXUS RELAX

Lexus Relax is a testament to the confidence we place in the quality of our vehicles. After your manufacturer's warranty finishes, you can still feel complete peace of mind, with 12 months OR 15,000km warranty when you service with us. So you can rest assured that your car is in safe hands—with expert technicians, who only use genuine parts. So your Lexus stays 100% Lexus.

When you choose Lexus to service your vehicle, we'll reward your loyalty. Once your service is due, all you need to do is bring your Lexus in for a service and your Lexus Relax warranty will be renewed until your next service is due—up to 10 years vehicle age or 185,000km (whichever comes first).



LEXUS

PERFORMANCE AND EFFICENCY

	2.5 PHEV AWD / HEV FWD
ENGINE (cc)	2.5 litre 4-cylinder in line
ACCELERATION 0-100KM/H (s)	6.3 / 8.7
TOP SPEED	200km/h
MAX POWER (hp)	309/190
MAX ENGINE TORQUE (Nm @ rpm)	227@ 3200 - 3700 / TBC
BATTERY (Type)	Lithium-ion Battery

EMISSIONS & FUEL CONSUMPTION

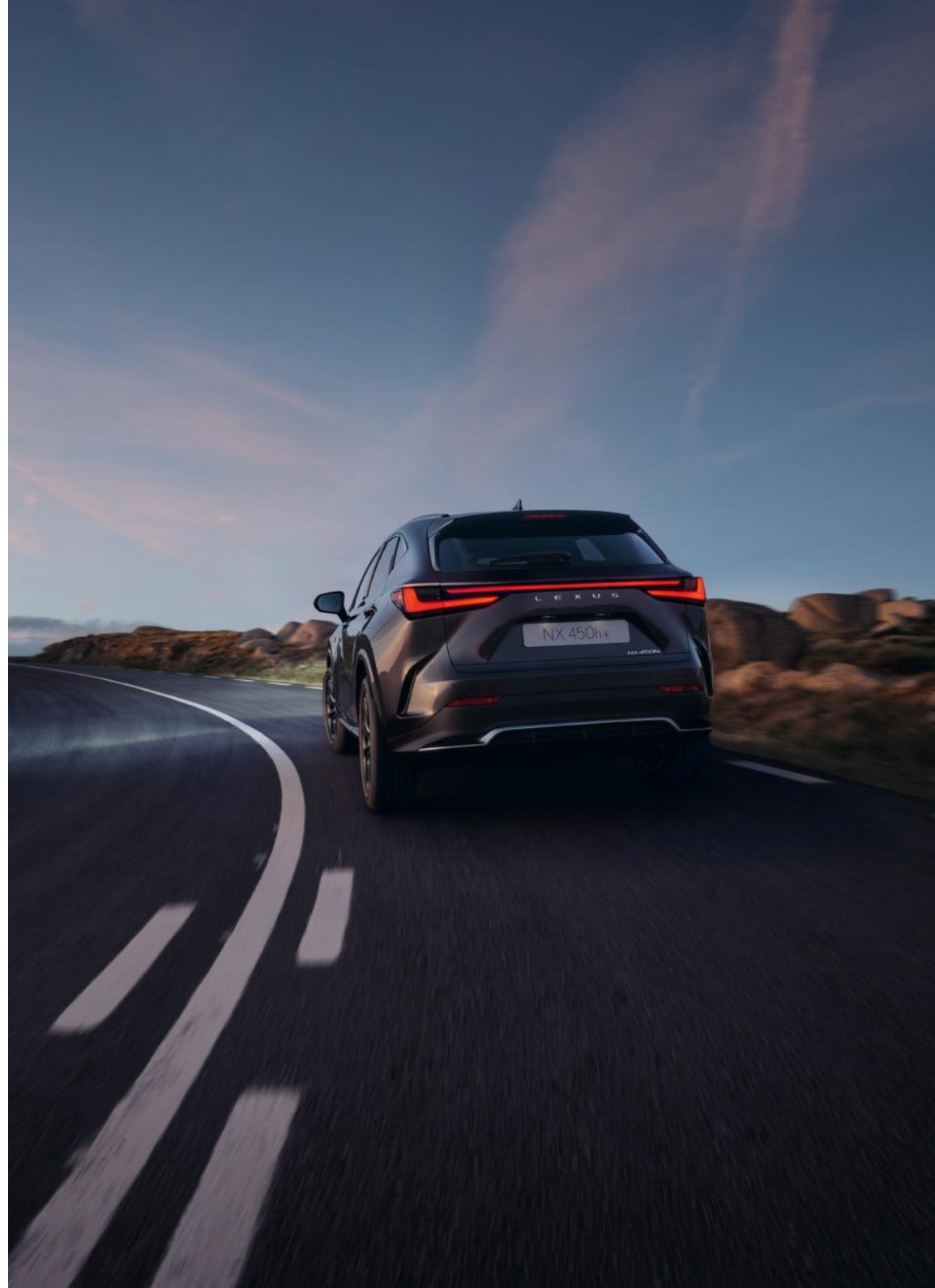
	2.5 PHEV AWD / HEV FWD
CO2 (g/km)	21-25* / 129*
FUEL (l/100km combined)	09.11* / 5.7*

DIMENSIONS

	2.5 PHEV AWD / HEV FWD
HEIGHT (mm)	1660 - 1680
LENGTH (mm)	4660
WIDTH (mm)	1865
MAX BOOT CAPACITY SEATS UP	520 litres
TURNING CIRCLE	11.6m
TOWING CAPACITY (Braked)	1000kg
CURB WEIGHT	2050kg / 1810kg

*Pending final homologation

LEXUS NX



LEXUS

AC CHARGING TIMES

Our breakthrough Lexus Plug-in technology allows you to enjoy a long range of emissions-free driving in EV mode with amazing refinement and powerful acceleration from a single charge, carried out at home or on the go. But that is only half the story. The car's Lexus Self-Charging Hybrid powertrain then comes into its own, providing an exceptionally efficient drive in hybrid mode, with low fuel consumption and emissions, irrespective of how long your journey is.

NX 450h+ PHEV

On Board Charger	6.6kW
Battery Capacity	18.1kWh
EV Range	70-74km*

32A Wall Box	Up to 2hrs 30 mins
--------------	--------------------

10A Home Socket	Up to 9hrs
-----------------	------------

*Pending final homologation



NX EQUIPMENT & SPECIFICATION



NX GRADES

EXECUTIVE



Safety

- LSS+ 3
- Supplemental Restraint System (SRS) airbags
- eCall
- Road Sign Assist
- Adaptive Cruise Control
- Pre-Crash System
- Blind Spot Monitor
- Anti-theft system - Intrusion Alarm, Glass Break Sensor, Angle, Ultra Wide Band
- Parking Sensors w/ Braking (PKSB)
- Reverse Camera w/ Guidelines
- Predictive Efficient Drive

PHEV / HEV

Nitrogen Oxides (NOx)	TBC mg/km
Fuel Consumption Combined(WLTP)	0.9/5.7 l/100km **
CO ² Combined (WLTP)	21/129 g/km**
Annual Road Tax	€140/€200
Braked Towing Capacity	1,000 kg
PHEV Range	74km**

Convenience

- Smart Entry w/ Power Back Door with Kick Function
- Wireless Charger
- Electric Powered Steering Column
- Heated Steering Wheel
- Drive Mode Select (Eco, Normal, Sport)
- Dual Zone Automatic Climate Control w/ Humidity Sensor & Nanoe X

Seats

- Driver And Passenger 8-Way Seat Adjustment
- Driver And Passenger Power Seat Slide
- Driver 4-Way Power Lumbar Support
- Front Seats Heated & Ventilated
- Driver Seat Memory
- Smooth Leather Upholstery

**Pending final homologation

Interior & Instrumentation

- Leather Steering Wheel w/ Audio Switches And Paddle Shifts
- Ambient Lighting (Single Colour)
- Illuminated Entry
- 7" Multi-Information Display

Audio & Nav

- 9.8" Touchscreen Display
- Smartphone integration - (Wireless Apple CarPlay™ & Android Auto™)
- Cloud Navigation

Exterior & Visibility

- LED Front Fogs
- Rain Sensor
- EC interior mirror
- Privacy Glass
- Bi-LED Single Bulb Headlamp w/ Automatic High Beam
- Integrated Roof Rails
- Power, Heated Auto-Folding, Electrochromatic (Driver) Door Mirrors, Reverse Tilt

Wheels

- 18" Alloy Wheels, (235/60 R18)
- Tyre Repair Kit

*Apple CarPlay is a trademark of Apple Inc.

NX GRADES

PREMIUM



Safety

- LSS+ 3
- Supplemental Restraint System (SRS) airbags
- eCall
- Road Sign Assist
- Adaptive Cruise Control
- Pre-Crash System
- Blind Spot Monitor
- Anti-theft system - Intrusion Alarm, Glass Break Sensor, Angle, Ultra Wide Band
- Parking Sensors w/ Braking (PKSB)
- Predictive Efficient Drive

Convenience

- Smart Entry w/ Power Back Door with Kick Function
- Wireless Charger
- Electric Powered Steering Column
- Heated Steering Wheel
- Drive Mode Select (Eco, Normal, Sport)
- Dual Zone Automatic Climate Control w/ Humidity Sensor & Nanoe X

Seats

- Driver And Passenger 8-Way Seat Adjustment
- Driver And Passenger Power Seat Slide
- Driver 4-Way Power Lumbar Support
- Front Seats Heated & Ventilated
- Driver Seat Memory
- Smooth Leather Upholstery

Exterior & Visibility

- LED front fogs
- Rain Sensor
- EC interior mirror
- Privacy Glass
- Integrated Roof Rails
- Power, Heated Auto-Folding, Electrochromatic (Driver) Door Mirrors, Reverse Tilt

Audio & Nav

- Smartphone integration - Wireless Apple CarPlay™* & Android Auto™)

Interior & Instrumentation

- Leather Steering Wheel w/ Audio Switches And Paddle Shifts
- Ambient Lighting (Single Colour)
- Illuminated Entry
- 7" Multi-Information Display

Adds to Executive

- Panoramic View Monitor
- 14" Touchscreen Display
- Embedded Navigation
- Quad-LED Headlamps w/ cleaners & Adaptive High Beam System
- Cornering Lamps
- Panoramic Electric Tilt & Slide Sunroof
- 20" 5 Double Spoke Alloy Wheels, (235/50 R20)
- Run Flat Tyres

Nitrogen Oxides (NOx)	TBC mg/km
Fuel Consumption Combined (WLTP)	1.1l/100km**
CO ² Combined (WLTP)	25 g/km**
Annual Road Tax	€140
Braked Towing Capacity	1,000 kg
EV Range	70 km**

**Pending final homologation

*Apple CarPlay is a trademark of Apple Inc.

NX GRADES

F SPORT



Safety

- LSS+ 3
- Supplemental Restraint System (SRS) airbags
- eCall
- Road Sign Assist
- Adaptive Cruise Control
- Pre-Crash System
- Blind Spot Monitor
- Anti-theft system - Intrusion Alarm, Glass Break Sensor, Angle, Ultra Wide Band
- Parking Sensors w/ Braking (PKSB)
- Predictive Efficient Drive

Convenience

- Smart Entry w/ Power Back Door with Kick Function
- Wireless Charger
- Electric Powered Steering Column
- Heated Steering Wheel
- Dual Zone Automatic Climate Control w/Humidity Sensor & Nanoe X

Interior & Instrumentation

- Illuminated Entry
- 7" Multi-Information Display

Seats

- Driver And Passenger 8-Way Seat Adjustment
- Driver And Passenger Power Seat Slide
- Driver 2-Way Power Lumbar Support
- Front Seats Heated & Ventilated
- Driver Seat Memory

Exterior & Visibility

- LED Front Fogs
- Cornering Lamps
- Rain Sensor
- EC interior mirror
- Privacy Glass
- Integrated Roof Rails
- Power, Heated, Auto-Folding Electrochromatic (Driver) Door Mirrors, Reverse Tilt

Audio & Nav

- Smartphone integration - (Wireless Apple CarPlay™* & Android Auto™)

Nitrogen Oxides (NOx)	TBC mg/km
Fuel Consumption Combined (WLTP)	1.1l/100km**
CO ² Combined (WLTP)	25 g/km**
Annual Road Tax	€140
Braked Towing Capacity	1,000 kg
EV Range	70 km**

Adds to Executive

- Panoramic View Monitor
- Adaptive Variable Suspension
- 14" Touchscreen Display
- Embedded Navigation
- Drive Mode Select (Eco, Normal, Sport, Sport+)
- F SPORT Leather Steering Wheel w/ Touch Switches
- Ambient Lighting (Multi Colour)
- Head-Up Display
- F SPORT Leather
- F SPORT Aluminium Pedals
- Sports Front Seats
- Heated Rear (Outer) Seats
- Quad LED Headlamps w/ cleaners & Adaptive Highbeam System
- Cornering Lamps
- F SPORT Exterior Design
- 20" F SPORT Alloy Wheels (235/50 R20)
- Run Flat Tyres
- Panoramic Electric Tilt & Slide Sunroof

**Pending final homologation

*Apple CarPlay is a trademark of Apple Inc.

LEXUS NX

NX EXTERIOR COLOURS



Astral Black **(212)**



Red **(3T2)**



Sonic Grey **(1L1)**



Sonic White **(085)**



Sonic Titanium **(1J7)**



Graphite Black **(223)**



Sonic Copper **(4Y5)**



Terrane Khaki **(6X4)**



Celestial Blue **(8Y6)**



F White **(083)** (F SPORT Only)



Sapphire Blue **(8X1)** (F SPORT Only)

LEXUS

NX INTERIOR TRIMS

To build upon the elegant interior of NX, a range of newly developed, modern and intricate details and trims have been created for its cabin.



3D BLACK PRISM

Takes the ever-appealing piano black finish but adds a carved three-dimensional fractal pattern to create trim with a vital x tech image (Executive + Premium)



FALUMINIUM

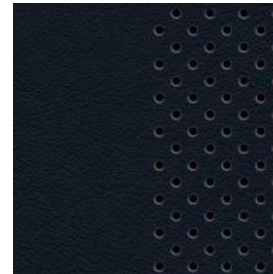
The F SPORT exclusive features spin-machined aluminium for a cold, sharp alluring finish

LEXUS

NX INTERIOR COLOUR SCHEMES

A total of 6 interior colours are offered, 3 for Executive & Premium and 3 for F SPORT

EXECUTIVE & PREMIUM



Black

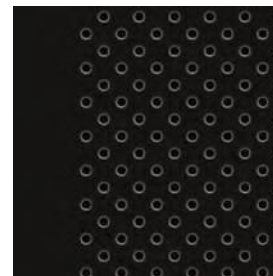


Ammonite Sand

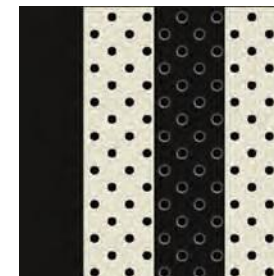


Dark Rose

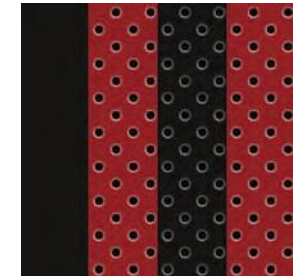
FSPORT



Black



White



Flare Red

LEXUS

NX KEY ACCESSORIES



NX ESSENTIAL PACK



NX SIDE STEPS



NX PREMIUM PACK



TRUNK LINER

Tailored to fit the trunk of your vehicle and provide protection against dirt and spills. The design features a special anti-slip surface pattern to help stop luggage moving.

FRONT & REAR MUD GUARDS

Lexus mud guards are especially shaped to fit the wheel arches of your vehicle. They help to maintain the vehicle exterior by protecting against excessive dirt, mud spray and flying stone chips.

SIDE STEPS

Easy access combines with a style feature along the side of your car. Lexus side steps add a stylish design feature while also protecting the side of your Lexus against scratching.

FRONT SKIRT

Designed to enhance your car's look of power and individuality. The Lexus front skirt integrates with and complements the NX's front bumper.

REAR SKIRT*

With its wrap-around styling, the Lexus rear skirt extends the depth of the NX's rear bumper to establish a dynamic, low profile, sporty appearance.

*Not applicable to F SPORT





To the best of our knowledge, all information in this product guide is correct at the time of going to print. Details of specifications and equipment provided in this product guide are subject to local conditions and requirements and may, therefore, vary from models available in your area. Please enquire with your local dealer for details on your local specifications and equipment. Vehicle body colours may differ slightly from the printed photographs in this Product Guide. Lexus Ireland reserves the right to alter any details of specifications and equipment without prior notice.

© 2024 by Lexux Ireland. No part of this publication may in any way be reproduced without the prior written approval of Lexus Ireland.

04/24/NX/IRE