

LEXUS ES 300h



ES

At Lexus, we have a lot to be proud of. A leader in luxury car electrification for nearly 20 years. Over 2.5 million Lexus Self-Charging Hybrids on the road across the globe. Cars that stand out for their sophistication, proven quality and award-winning reliability.

These are impressive facts, but for Lexus, performance is more than just numbers. And electrification is more than just batteries and motors. It's the chance to define a new kind of driving pleasure, where each journey radiates confidence, control and comfort. With your Lexus responding instantly to your every move, you'll enjoy a luxury that is personal, a luxury rooted in the uniquely crafted connection between car and driver.

Just drive the ES 300h Lexus Self-Charging Hybrid saloon and you'll know what we mean.

This is Lexus Electrified.

Scan the QR code to learn more about the Lexus ES300h



ALL IMAGES CONTAINED IN THIS DOCUMENT ARE FOR ILLUSTRATIVE PURPOSES ONLY.
LOCAL SPECIFICATION MAY VARY.

LEXUS ES



LEXUS

LEXUS LINK+

Driving in a Lexus has never been better and with Lexus Link+ the experience becomes even smoother, so you're always comfortable and in control, no matter where your drive takes you.

The new Lexus Link+ app provides drivers with a seamless set of connected services for your Lexus. Created with ease in mind, use the app on your smartphone to communicate with your car from any location.

Depending on model and grade you have a range of features available, for example:

- Remote Climate Control
- Remote Lock and Unlock
- Hybrid Coaching

Scan the QR code to learn more about the Lexus Link+ App.



LEXUS

MANUFACTURER'S WARRANTY

For peace of mind Lexus manufacturer's warranty ensures that every trip runs smoothly with:

Manufacture Warranty

- 3yrs/100,000km - Manufacture Warranty
- 3yrs/unlimited mileage - Surface rust/ Paintwork
- 12yrs/unlimited mileage - Corrosion Perforation

Hybrid Warranty

- 5yrs/100,000km - All Hybrid Components (Including Hybrid Battery)
- Up to 15yrs/unlimited mileage Hybrid Battery Warranty once serviced with a Lexus Dealer

For further warranty details contact your Local Lexus Dealer.



LEXUS

LEXUS RELAX

Lexus Relax is a testament to the confidence we place in the quality of our vehicles. After your manufacturer's warranty finishes, you can still feel complete peace of mind, with 12 months OR 15,000km warranty when you service with us. So you can rest assured that your car is in safe hands—with expert technicians, who only use genuine parts. So your Lexus stays 100% Lexus.

When you choose Lexus to service your vehicle, we'll reward your loyalty. Once your service is due, all you need to do is bring your Lexus in for a service and your Lexus Relax warranty will be renewed until your next service is due—up to 10 years vehicle age or 185,000km (whichever comes first).



LEXUS

PERFORMANCE AND EFFICIENCY

	2.5 HEV FWD
ENGINE (cc)	2487- 4 cylinder in line
ACCELERATION 0-100KM/H (s)	8.9
MAX POWER (hp/kW)	178 / 131
MAX ENGINE TORQUE (Nm / RPM)	221 / 3600-5200
BATTERY (Type / Cells)	Ni-MH / 204

EMISSIONS & FUEL CONSUMPTION

	2.5 HEV FWD
CO2 (g/km)	120-122
FUEL (l/100km combined)	5.3 - 5.4

DIMENSIONS

	2.5 HEV FWD
HEIGHT (mm)	1445
LENGTH (mm)	4975
WIDTH (mm)	1865
MAX BOOT CAPACITY SEATS UP	454 litres
TURNING CIRCLE	11.8m
TOWING CAPACITY (Braked)	0kg
CURB WEIGHT	1740kg



LEXUS ES

ES EQUIPMENT & SPECIFICATION



ES GRADES

DYNAMIC



Safety

- Lexus Safety System+ 2.5
- Supplemental Restraint System (SRS) airbags
- Blind spot monitor (BSM)
- Reverse Camera with on-screen guides
- Lane trace assist
- Road sign assist
- Adaptive cruise control
- Parking support alert / brake (Front & Rear - Objects and Vehicles)

Convenience

- Dual zone automatic climate control w/humidity sensor
- Rain sensing windscreen wipers
- Power tilt telescopic steering
- Sunroof w/ tilt and slide
- Electronic park brake
- Wireless Smartphone Charging
- Windshield De-icer

Interior & Instrumentation

- 3-spoke, leather steering wheel
- 7" colour multi-information instrument cluster
- Instrument Panel Finish (Film)
- Drive Mode Select (Eco, Normal, Sport)

Seats

- Tahara leather
- Driver & Passenger Power 6-way adjust
- Driver Power lumbar support 2-way
- Heated front seats

Audio & Nav

- 12.3" Touchscreen display audio
- Smartphone integration (Wireless Apple CarPlay™* & Android Auto)
- Lexus Premium navigation

Exterior & Visibility

- Privacy Glass
- Bi-LED Headlamps w/ Automatic High Beam
- LED Daytime Running Lights
- Cornering lamps
- Power, folding, auto dimming door mirrors
- Follow Me Home Headlamps
- Front Turn Signal (Bulb)

Wheels

- 18" alloy wheels, machine finished, two tone (235/45 R18)
- Tyre repair kit

Nitrogen Oxides (NOx)	1.9 mg/km
Fuel Consumption Combined (WLTP)	5.3 l/100km
CO ₂ Combined (WLTP)	120 g/km
Annual Road Tax	€190
Braked Towing Capacity	0 kg

*Apple CarPlay is a trademark of Apple Inc.

LEXUS ES

ES GRADES

PREMIUM



Safety

- Lexus Safety System+ 2.5
- Supplemental Restraint System (SRS) airbags
- Blind spot monitor (BSM)
- Reverse Camera with on-screen guides
- Lane trace assist
- Road sign assist
- Adaptive cruise control

Audio & Nav

- Smartphone integration (Wireless Apple CarPlay™* & Android Auto)
- Lexus Premium Navigation

Convenience

- Dual zone automatic climate control w/ humidity sensor
- Rain sensing windscreen wipers
- Sunroof w/ tilt and slide
- Electronic park brake
- Wireless Smartphone Charging
- Windshield De-icer

Interior & Instrumentation

- 7" colour multi-information instrument cluster
- Drive Mode Select (Eco, Normal, Sport)

Wheels

- Tyre repair kit

Exterior & Visibility

- Privacy Glass
- LED Daytime Running Lights
- Cornering lamps
- Follow Me Home Headlamps

Adds to / Updates from Dynamic

- Panoramic View Monitor w/ Pedestrian Alert
- Parking Support Alert / Brake (Front & Rear Objects, Vehicle & **Pedestrians**)
- Power Tilt Telescopic Steering inc. **Seat Slide**
- Auto & Easy Trunk Closer w/ Kick Sensor
- Sun Shade w/ - Rear Window Automatic & Rear Door Manual
- 3-Spoke, **Heated**, Leather & **Wood** Steering Wheel
- Instrument Panel Finish (**Wood**)
- Smooth Leather Seats w/ Driver Cushion Length Adjuster
- D&P Power 6-Way Adjust **w/ Driver Memory**
- Driver Power Lumbar Support **4-Way, Passenger 2-Way**
- Heated & **Ventilated** Front Seats
- 12.3" Touchscreen Display Audio w/ **Mark Levinson**
- Quad-LED w/ Adaptive Highbeam System and Adaptive Front-Lighting
- Front Turn Signal (**LED**)
- Power, **Auto-Folding, Electrochromatic** Door Mirrors, **Reverse Tilt w/Memory**
- 18" Alloy Wheels, **5 Multi-Spoked, Hyper Chrome** (235/45 R18)

Nitrogen Oxides (NOx)	1.9 mg/km
Fuel Consumption Combined (WLTP)	5.3 l/100km
CO ₂ Combined (WLTP)	121 g/km
Annual Road Tax	€200
Braked Towing Capacity	0 kg

*Apple CarPlay is a trademark of Apple Inc.

LEXUS ES

ES GRADES

F SPORT



Safety

- Lexus Safety System+ 2.5
- Supplemental Restraint System (SRS)
- Panoramic View Monitor w/ Pedestrian Alert
- Blind spot monitor (BSM)
- Lane trace assist
- Road sign assist
- Adaptive cruise control
- Parking Support Alert / Brake (Front & Rear - Objects, Vehicles)

Convenience

- Dual zone automatic climate control w/ humidity sensor
- Rain sensing windscreen wipers
- Electronic park brake
- Wireless Smartphone Charging
- Windshield De-icer

Wheels

- Tyre repair kit

Exterior & Visibility

- Privacy Glass
- LED Daytime Running Lights
- Cornering lamps
- Follow Me Home Headlamps

Audio & Nav

- Smartphone integration (Wireless Apple CarPlay™*, **wired** Android Auto)
- Lexus Premium navigation
- 12.3" Touchscreen Display Audio

Adds to / Updates from Dynamic

- Adaptive Variable Suspension
- Performance Dampers (Front and Rear)
- 3 spoke, **F SPORT** Steering Wheel
- Power Tilt Telescopic Steering inc. **Seat Slide**
- F SPORT Aluminium Accelerator & Brake Pedals
- Instrument Panel Finish (**Aluminium**)
- Drive Mode Select (Eco, Normal, Sport, **Custom**)
- **8"** Colour Multi-Information Instrument Cluster
- **FSPORT** Tahara Leather Sports Seats
- D&P Power 6-Way Adjust **w/ Driver Memory** Passenger
- Power Lumbar Support 2-Way
- Quad-LED w/ Adaptive Highbeam System and Adaptive Front-Lighting System
- Front Turn Signal (**LED**)
- Power, **Auto-Folding, Electrochromatic** Door Mirrors, **Reverse Tilt w/ Memory**
- 19" 5-Twin-Spoke Alloy Wheels (235/40 R19)

Nitrogen Oxides (NOx)	1.9 mg/km
Fuel Consumption Combined (WLTP)	5.4 l/100km
CO ₂ Combined (WLTP)	122 g/km
Annual Road Tax	€200
Braked Towing Capacity	0

*Apple CarPlay is a trademark of Apple Inc.

LEXUS ES

ES EXTERIOR COLOURS



Sonic Titanium **(1J7)**



Sonic Grey **(1L1)**



Sonic Platinum **(1L2)**



Graphite Black **(223)**



Morello Red **(3R1)**



Ice Ecu **(4X8)**



Sunlight Green **(6X0)**



Sonic White **(085)** - N/A on FSPORT



Deep Blue **(8X5)** - N/A on FSPORT



F White **(083)** - FSPORT ONLY

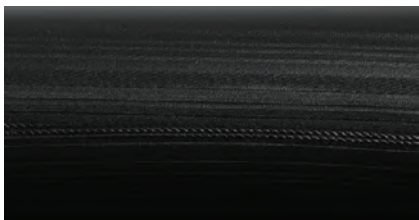


Sapphire Blue **(8X1)** - FSPORT ONLY

LEXUS

ES INTERIOR TRIMS

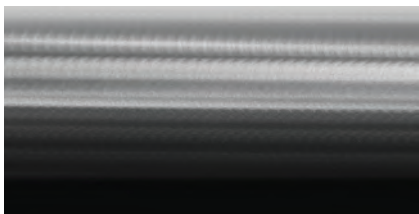
Black Grain is the standard inlay on Dynamic grades, while F Aluminum remains exclusive to and standard on ES F SPORT.



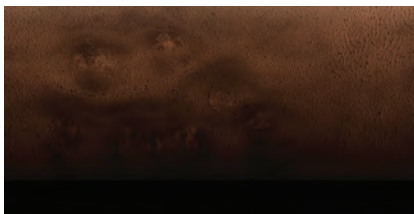
Black Grain - DYNAMIC



SUMI Black Walnut - PREMIUM



F Aluminum - FSPORT

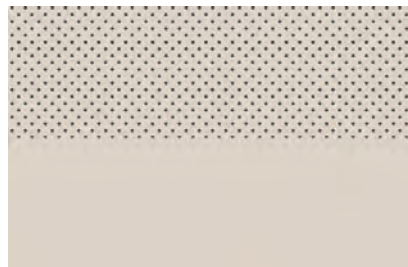


Brown Walnut - PREMIUM

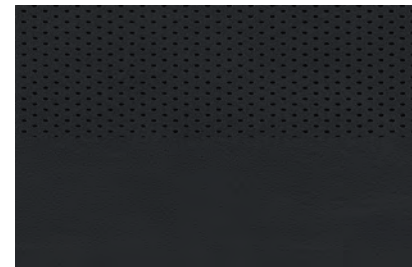
LEXUS

ES INTERIOR COLOUR SCHEMES

ES Dynamic and Premium grades offer a choice of two interior colours that embody a modern yet refined impression.



Ammonite Sand



Black

An F White colour scheme is available for ES F SPORT for an elevated sporting impression.



F White

LEXUS

ES KEY ACCESSORIES



ES ESSENTIAL PACK



TRUNK LINER

Tailored to fit the trunk of your vehicle and provide protection against dirt and spills. The design features a special anti-slip surface pattern to help stop luggage moving.

REAR BUMPER PROTECTION PLATE

Designed to protect the rear bumper paintwork against scratching when sliding heavy or awkward loads into the boot. It is also particularly effective for guarding the paintwork of the boot area.

ES ILLUMINATED SCUFF PLATES



ILLUMINATED SCUFF PLATES

Genuine scuff plates for the door sills create an immediate impression of style while also serving a very practical purpose of protecting the sill paintwork from dirty marks, scrapes and scratches.

ES LEXUS PROTECT



LEXUS PROTECT

Lexus ProTect is a revolutionary new way of giving your car a showroom finish. Just one application of ProTect is all that's required for five years gauranteed peace of mind.

- Preserves and shines paintwork
- Keeps alloy wheels clean
- Creates an invisible shield to car for upholstery



© 2024 Lexus Ireland reserves the right to alter any details of specifications and equipment without notice. Details of specifications and equipment are also subject to change to suit local conditions and requirements. Note: vehicles pictured and specifications detailed in this guide may vary from models and equipment available in your area. Vehicle body colour might differ slightly from the printed photos in this product guide.

For further information please visit our website: www.lexus.ie. Taking care of the environment is a priority for Lexus. We take many measures to ensure that during the lifecycles of our vehicles - from design, production, distribution, sales and service to end-of-life - their environmental impact is minimised.